



ALL ABOARD THE COMMUNITY TRANSPORTER

The Redfern Centre

9 Ogden Lane
REDFERN
NSW 2016

PH: 9319 4439
FAX: 9319 4560

Web: www.ssct.org.au

Issue 12: November 2008

Our AGM

We had a very successful AGM this year with over 100 members attending the meeting. Next year our AGM will have to be held in a much larger and air conditioned venue as current membership now exceeds 210 people.

We were very pleased to greet our 13 new members from the Chinese community and we hope that we can encourage more people to join the agency. An afternoon tea will be held for the Chinese community on the 2nd December to describe the services available.

The members voted to retain the current schedule of fees with the exception of the day excursions which will increase from \$6.00 to \$7.00 per outing. The increase is to assist the agency cover the rising fuel costs, which have risen from \$3,000 a month to over \$4,500 a month in the last three months. The fee increase will come into effect from January 2009.

At the AGM one of the members asked a question about

how much services cost to operate and therefore how much should clients contribute in fares.

Passenger fees are not collected to cover the cost of a trip. They enable SSCT to build a reserve to cover the cost of vehicle replacement.

Most of the services provided by SSCT are funded by a government grant. So the driver, admin and vehicle running costs are covered each year we receive CPI of between 2.1 to 3.3% on the grant to meet the cost of inflation.

However, in the past three years this small increase has not kept pace with our actual costs, especially since the State Government awarded the staff a 3.3% pay rise. This year CPI can't cover both the increasing cost of fuel and staff wages and our only recourse is to reluctantly ask the membership to look at the fee schedule.

If you have any questions regarding fees or operational policy please contact the SSCT Manager Jane Rogers for further information.

Staff Profile

Franco Solimon



Place of Birth:
Vicenza, Italy

Position in service:
Individual Medical
Transport Driver

Time in service:
Three months

4 people to invite to dinner:
Nelson Mandela,
Anthony Hopkins,
Bill Gates, Sacha
Baron Cohen

I've always wanted to go to...
The Pyramids of
Giza

Favorite Sport:
Soccer

Favorite Book:
Catch 22

Favorite Movie:
Chariots of Fire



Service News :

A reminder for all clients who travel on the Market or Get Out of Town (GoT) buses.

The Service funded by the Community Transport Program targets people who are between 55 and 75 , who are financially disadvantaged , live in Department of Housing high rise and have no other means of getting out of town.

There are no carers provided on the bus and clients need to be fit and healthy to manage the walk both to and from the bus stop and during the excursion.

The nominated pickup spots are: The Redfern Centre, Poet's Corner, Matavai / Turunga, Northcott and The Alexandria Activity Centre.

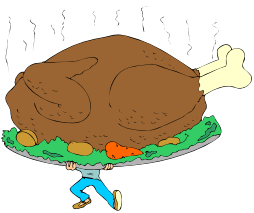
Exceptions to this rule will only be made in extreme weather conditions. So please do not press the driver's to work outside their parameters.

If you need a door to door social excursion please ask the office about Round-about and the free social outings provided by RICHSS.

On another note, we are taking suggestions for destinations for 2009 bus trips.

Please bear in mind that according to regulations set out by the Ministry of Transport we are not able to make trips more than 100 km's outside Redfern.

If you have suggestions for some trips closer to town please call Jenny at the office.



The SSCT Members Christmas Party is FULLY Booked

All 130 seats for our Christmas party on December 16th have been filled!

Although you can still put your name down for a standby seat just incase a vacancy comes up this year.

We are sorry for those who have missed out, best to book early next year.

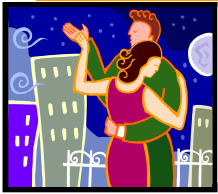
Jenny and Rufina will contact you in early December regarding your bus pick up time.

We look forward to seeing you for a fun afternoon of food, music and dancing!



Bus Calendar November 2008

DAY	DATE	GROUP	DRIVER	VEHICLE	DESTINATION
Saturday	1-Nov-08	GoT	Julie	Rosa	Cattai NP/Windsor
Sunday	2-Nov-08				
Monday	3-Nov-08	RICHSS	Joe O	Ethel	
Monday	3-Nov-08	Northcott	Peter	Rosa	Eastern Beaches
Tuesday	4-Nov-08	AQUA	Kevin	Louie	Swimming
Wednesday	5-Nov-08	Metro	Joe O'Neill	Ethel	Shopping
Wednesday	5-Nov-08	Orient	Peter	Rosa	Outing
Thursday	6-Nov-08	Northcott	Peter	Fern	Surry Hills
Thursday	6-Nov-08	Northcott	Peter	Fern	Eastlakes
Thursday	6-Nov-08	W'Loo Shop	Bill	Mila	Eastlakes
Friday	7-Nov-08	Millers Point	Peter	Fern	Leich/Broad
Friday	7-Nov-08	SSCA	Joe O	Ethel	Outing
Saturday	8-Nov-08	Russian	Volodymir	Rosa	
Sunday	9-Nov-08				
Monday	10-Nov-08	Walkabout	Joe O	Ethel	Outing
Tuesday	11-Nov-08	Blindies	Joe O'Neil	Ethel	Outing
Tuesday	11-Nov-08	Wadad	Peter	Rosa	Outing
Tuesday	11-Nov-08	AQUA	Kevin	Louie	Swimming
Wednesday	12-Nov-08	Blokes	Yue	Murphy	Lane Cove River
Wednesday	12-Nov-08	Glebe Shop	Joe O	Ethel	Shopping
Thursday	13-Nov-08	Eastlakes	Joe O'Neill	Ethel	Shopping
Thursday	13-Nov-08	Northcott	Peter	Fern	Surry Hills
Thursday	13-Nov-08	Northcott	Peter	Fern	Metro
Thursday	13-Nov-08	W'Loo Shop	Bill	Mila	Metro
Friday	14-Nov-08	Eastgardens	Joe O'Neill	Ethel	Shopping
Friday	14-Nov-08	Millers Point	Peter	Fern	Metro
Saturday	15-Nov-08	MARKET	Errin	Rosa	
Sunday	16-Nov-08				
Monday	17-Nov-08	RICHSS	Joe O	Ethel	Outing
Monday	17-Nov-08	SSCA	Peter	Rosa	
Tuesday	18-Nov-08	AQUA	Kevin	Louie	Swimming
Wednesday	19-Nov-08	Metro	Joe O'Neill	Ethel	Shopping
Wednesday	19-Nov-08	Surry Hills	Peter	Rosa	Outing
Thursday	20-Nov-08	Northcott	Peter	Fern	Surry Hills
Thursday	20-Nov-08	Northcott	Peter	Fern	Eastlakes
Thursday	20-Nov-08	W'Loo Shop	Bill	Mila	Eastlakes
Friday	21-Nov-08	Millers Point	Peter	Fern	Leich/Broad
Friday	21-Nov-08	Outings	Joe O	Ethel	Mystery Tour
Saturday	22-Nov-08	Russian	Volodymir	Rosa	Watson's Bay
Sunday	23-Nov-08				
Monday	24-Nov-08	Roundabout	Joe O	Ethel	Fisherman's Wharf
Tuesday	25-Nov-08	Blindies	Joe O'Neil	Ethel	Outing
Tuesday	25-Nov-08	Glebe Ex	Peter	Rosa	Outing
Tuesday	25-Nov-08	AQUA	Kevin	Louie	Swimming
Wednesday	26-Nov-08	Glebe Shop	Joe O	Ethel	Shopping
Thursday	27-Nov-08	Eastlakes	Joe O'Neill	Ethel	Shopping
Thursday	27-Nov-08	Northcott	Peter	Fern	Surry Hills
Thursday	27-Nov-08	Northcott	Peter	Fern	Metro
Thursday	27-Nov-08	W'Loo Shop	Bill	Mila	Metro
Friday	28-Nov-08	Eastgardens	Joe O'Neill	Ethel	Shopping
Friday	28-Nov-08	Millers Point	Peter	Fern	Metro
Saturday	29-Nov-08	GoT	Errin	Rosa	Terrigal
Sunday	30-Nov-08				
Monday	1-Dec-08	RICHSS	Joe O	Ethel	Outing
Monday	1-Dec-08	Northcott	Peter	Rosa	Petes Mystery tour



In November why not try...

Some of the services offered by your local Community centers.

South Sydney Community Aid Multicultural Centre , 73 Garden Street Alexandria 9319 4073 organise the following:

Free Painting morning for people from many cultures
Every Thursday
from 10am – 1pm
Proudly sponsored by
Housing NSW

Baking Class

Every Monday
SSCA hold a
baking class

between 10am and 12pm
at the Alexandria Town Hall
at a cost of \$2 a lesson.

Contact Beibei Jhan if you
are interested.



Cantonese Opera

Every Monday afternoon SSCA are offering Cantonese Opera, a traditional art form which incorporates music, martial arts and acting. It's very popular in Canton, Hong Kong, Macau, Singapore and Malaysia.